

EPIFIX APPLICATION GUIDE



EpiFix® is a dehydrated human amnion/chorion membrane (dHACM) allograft that provides a barrier, modulates inflammation, enhances healing, and reduces scar tissue formation. EpiFix allografts have a 5-year shelf life and should be stored at ambient conditions. EpiFix is intended for homologous use in the treatment of acute and chronic wounds.

STEP ONE WOUND BED PREPARATION

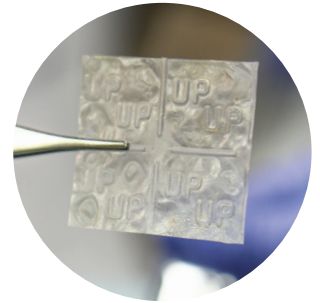
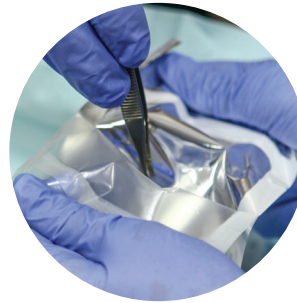
- Prepare wound bed as needed using clinical judgment and ensure the wound is properly debrided



STEP TWO REMOVAL FROM PACKAGING

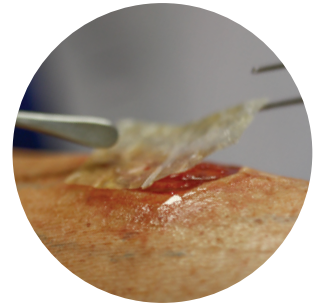
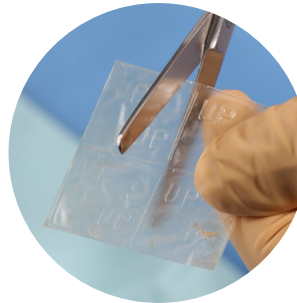
Using aseptic technique:

- Carefully open the peelable corner of the outer pouch and extract the inner pouch using aseptic technique
- Once the pouch is open, remove EpiFix with fingers or non-toothed, sterile forceps



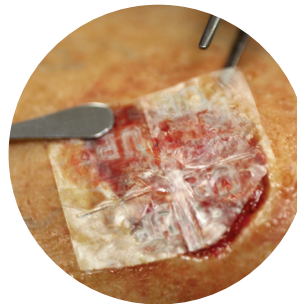
STEP THREE PREPARATION AND APPLICATION

- EpiFix may be cut with sharp scissors to the size required
- Place EpiFix on the wound site using the orientation of the embossment lettering as a guide (UP should read left to right)



STEP FOUR DRESSINGS AND SUPPORT THERAPIES

- Cover EpiFix with a non-adherent contact layer and maintain a moist wound environment using the appropriate moisture management dressings for the wound type
- EpiFix should not be disturbed, if possible, for several days or until the next application
- EpiFix is compatible with offloading, compression, negative pressure, and hyperbaric oxygen therapies



**For full application instructions and additional product information, please refer to the Instructions for Use included in the product carton.*



Patents and patents pending see: www.mimedx.com/patents
EpiFix®, PURION® and MiMedx® are registered U.S. trademarks of MiMedx Group, Inc.
©2019 MiMedx Group, Inc. All rights reserved. EP569.001

